

**Kennall Vale School**  
 Ponsanooth, Cornwall TR3 7HY  
 Headteacher ~ Mrs Louise Northern  
 Tel/Fax: 01872 863672  
*e-mail:* [secretary@kennall-vale.cornwall.sch.uk](mailto:secretary@kennall-vale.cornwall.sch.uk)  
*website:* [www.kennall-vale.cornwall.sch.uk](http://www.kennall-vale.cornwall.sch.uk)

# Newsletter

30.11.16

Dear Families,

I am writing this newsletter whilst listening to the sound of children singing Christmas songs. It's such a lovely time of year- although once again I have lost a secretary – she is busying herself with rehearsing classes for their various productions. In all seriousness, I do thank her; it certainly falls well outside her job description!

Two important events to remind you about: Firstly the annual **Ponsanooth Christmas Lights Procession**. This takes place this Saturday on **3<sup>rd</sup> December**. Children will need to convene in the school carpark at 6.40pm and remain the responsibility of their parents. The second event is the annual **Carol Service in the Methodist Chapel**. This takes place on **Sunday 11<sup>th</sup> December at 4.30pm**. Again, children from Kennall Vale will sing Carols. Please do come if you are able.



**The Poppy appeal** raised £76. Thank you for supporting this.



The **Courtesy Cup** was awarded to Haydn from Morgawr and to Amelie P from Cormoran; both children have shown great thoughtfulness!

Freddie, Oak, Millie W and Kieran joined me on the **Captain's table** last week – The conversation was great, I thoroughly enjoyed myself, thank you!

## Lanterns

**Mr Crosby** was with us once again yesterday to make lanterns with Bedruthan Class. They look fantastic! You will be able to see them on Saturday (**6.40pm in the school carpark ready to process down to the tree**).

## Gift Labels

Thank you to the Friends of Kennall Vale for organizing this; it all went very smoothly. Please remember to return your **labels with names** on to your **class teacher**. Please also remember to bring a named **bag on shopping day (12<sup>th</sup> Dec)**.



**Thank you** to Mrs Medlin, Mr Chirgwin and members of The School Council for taking all our beautifully wrapped shoe boxes to Shoe Zone in Redruth. I think they will put smiles on lots of little faces. Thank you for taking the trouble to do these.

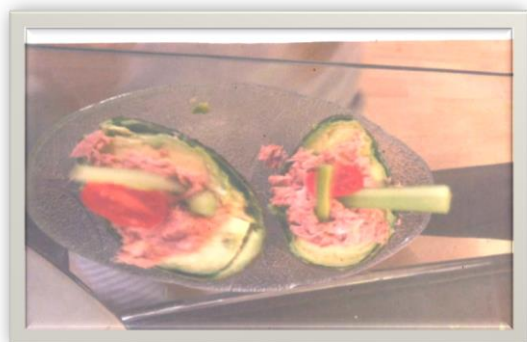


Fruit of the week this week: **Tomato**



## Healthy Schools

I note some pupils have tried following the recipes posted on our Healthy Schools Board – well done! Just look at this delicious dish made by Bessie – tuna and avocado cups, they look really yummy. I was so inspired that I went home and made guacamole last week with ‘fruit of the week’ – absolutely delicious!



## Lunchbox of the Week!

The award for the healthiest lunchbox of the week went to Oscar. His lunchbox was packed with lots of good things. He won a lovely big papaya! Well done Oscar!

## Dates for your diary

Date	Event
02.12.16	Morgawr Class Assembly
03.12.16	Ponsanooth Lantern Parade - Meeting in school carpark @ 6.40pm
05.12.16	Piskies Christmas Play at 1.30pm
06.12.16	Cormoran Christmas Play at 1.30pm
07.12.16	Morgawr Christmas Play at 1.30pm
08.12.16	Bedruthan Christmas Production at 6.15pm
02.12.16	All After School Clubs Finish This Week
11.12.16	Ponsanooth Carol Service at 4.30pm in the Methodist Church
12.12.16	Christmas Shopping Day and Santa!
14.12.16	Christmas Lunch and Parties – all classes
16.12.16	Break up for Christmas

## Cycle Safety

Some concern has been raised about children riding bikes around the village with **no lights**.



## Craft Activity

This Sunday (4<sup>th</sup>) from 3-5pm there is an opportunity for children to make stained glass windows in the chapel. This will be run by Michelle from the Post Office. It is a drop in activity for children of all ages – please come along and join in the fun. Could you please also spread the word!

And finally...



Over to the children.....

I think you'll agree that Lewis (Cormoran) has put a great deal of effort into this lovely writing. Thank you Lewis.

Kind regards,

Louise Northern

